

## Instruction manual: Seatpost with offset

### **Important installation instructions:**

We congratulate you on your purchase and thank you for your trust in our products. Your new carbon seatpost withstands highest stress and has been made to the latest and most efficient methods of design and manufacture. This includes special features that must be considered for installation.

Please read these instructions carefully and make sure that they are observed.

As a buyer of our carbon products, you are certainly aware of the importance of the careful installation of your new carbon tube.

If you feel uncertain about the installation of your new seatpost, please contact us or your nearest dealer presenting these installation instructions.

Tightening torques are low and so special installation compound for carbon (**do not use installation grease!**) can help improve the reliability of clamping.

Tighten the screws of the seat post maximum to **5 Nm**. Tighten the screw of the seat post clamp at the frame maximum to **6 Nm**. If the frame manufacturer recommends higher tightening torques, these normally are for thick-wall aluminum posts and not for your new carbon post.

Due to the special design of the offset post the front screw of the seat clamp cannot directly be tightened by the Allen wrench; therefore, setting the seat angle requires some patience. You can only tighten the rear screw by the torque wrench. If the seat angle is not as required after tightening the rear screw, slacken the rear screw, rotate the front yoke one or several half turns and then tighten the rear screw again to not more than **5 Nm**. Repeat this procedure as often as necessary to obtain the correct seat angle.

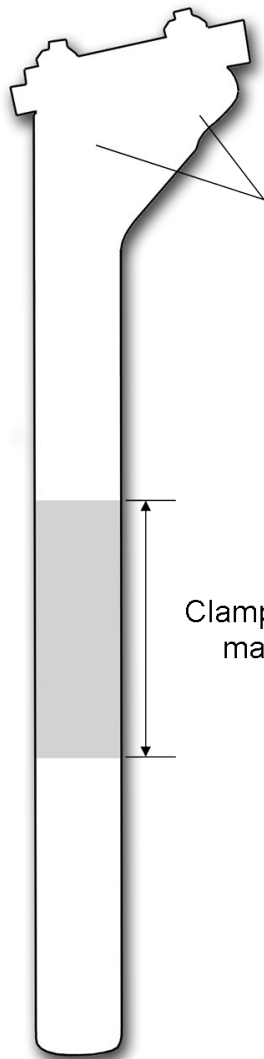
Two silver washers are preinstalled under the two screws clamping the seat. If your seat has highly oval stays, remove the washers to be sure that the screw thread engages the aluminum yoke securely.

From practical experience we recommend applying some Loctite thread locker (light or medium) to the screw thread. This ensures that the screws cannot come loose even during rough rides.



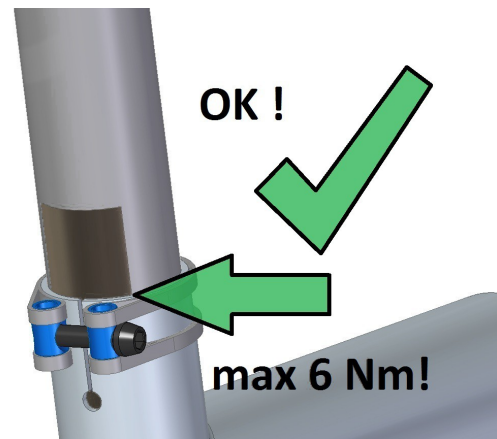
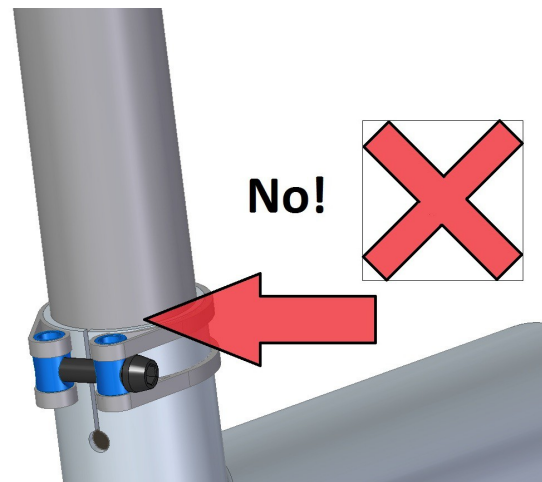
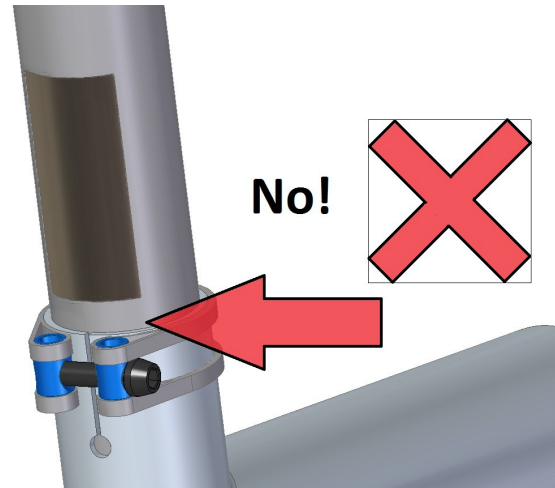
**As you can see in the drawing, a square with a different fiber orientation is laminated into the back of your new seat post. This square marks the permitted clamping range of your post. Make sure that the seat post is inserted in the frame deep enough so that the frame top edge is within this mark. In no case must be seat post be clamped outside the marking. The seat post is reinforced only for the specified clamping forces; so if you clamp the post outside the specified range, you damage your new Mcfk post (even if you will not see the damage directly) and pose an enormous safety risk yourself and for other riders.**

Non-compliance with these installation instructions or of the specified maximum tightening torques voids your warranty and any claim under it and exposes you and others to an incalculable risk.



Seat clamping:  
max 5 Nm

Clamping zone:  
max 6 Nm



## Warranty:

We grant a warranty of two years from the date of purchase of our products. Warranty claims can only be accepted if a (copy of the) dealer invoice is available.

The warranty covers defects of material and workmanship; it does not cover defects due to:  
Normal wear and tear  
Improper use  
Non-compliance with the instructions for use.

Warranty claims must be settled on site and are at the discretion of the firm Mcfk. The warranty granted by the firm Mcfk does not include compensation of damage; particularly any indirect damage in connection with an accident, any other indirect or consequential damage are excluded from our warranty.

The satisfaction of our customers is important to us. For this reason, we usually treat problems with our products very generously, also outside the warranty period. Please clean and return the parts and add a brief written account (including your contact data) and a copy of the invoice of the consignment.