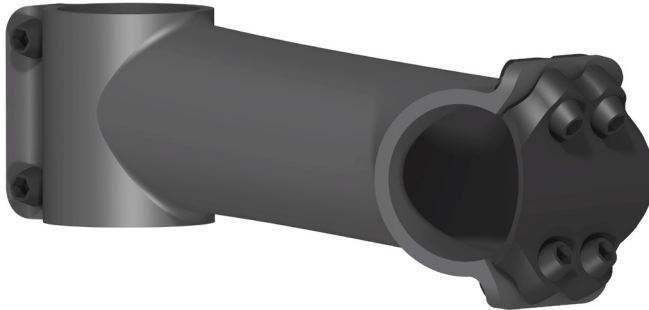


Mcfk – stem



Thank you very much for buying our products. Please read the instructions carefully and follow the installation details. Have your Mcfk product assembled exclusively by a specialized dealer and present this manual to him for guidance. Please note that the manual is part of the product and as such should be kept safely.

Intended use

The Mcfk stem is approved for a rider weight of up to 100 kg and can be used on street bikes, cyclocross or mountain bikes. Uses for downhill rides or massive jumps are not intended. The handlebar stem must only be used with steer tubes of 28.6 mm diameter and handlebars of 31.8 mm diameter.

Replace all parts without delay after a fall/accident or when they have been used improperly. Even if you cannot see any defects such as a crack, deformation or mechanical wear, we cannot warrant the safe use of such parts.

Installation on the steer tube (only for specialized dealers)

Before starting work, make sure that the steer tube is compatible with the stem. Also check back with the use instructions of the bicycle maker and the steer tube supplier. Remove sharp edges and burrs and any other contamination / grease from the steer tube before starting assembly. Be particularly attentive to cutting edges of shortened steer tubes and rework the edges if necessary.

Install the stem on the steer tube until it audibly contacts the top spacer or the steer bearing. Then attach a suitable ahead cap and set the bearing clearance. Align the handlebar stem straight forward in the direction of riding and tighten the two clamping screws alternately to a tightening torque of 3.5 Nm. Make sure that the assembly is locked against rotation. If it is not locked, tighten the two clamping screws further in steps of 0.5 Nm and then check again. Never exceed the maximum permitted tightening torque!

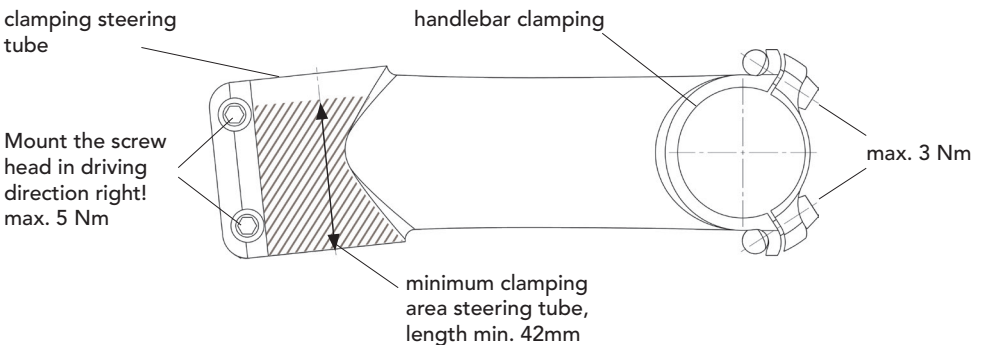
The length of the clamping surface of the steer tube should at least be 42 mm. Otherwise damage may be caused that would be an enormous safety risk for the rider and for others. Do not install the handlebar stem without the factory installed spacers in the clamping gap.

Tighten the screws at the shaft clamp to maximum 5 Nm.

Installation of the handlebar (only for specialized dealers)

Before starting work, make sure that the handlebar is compatible our handlebar stem. Also check back with the use instructions of the handlebar maker. If necessary, at first remove the handles, brake and gearshift levers from the handlebar. Slacken the clamping screws which fix the handlebar to the stem and push the handlebar in the stem from the side. Align the handlebar centrally. Next, tighten the screws of the handlebar clamp alternately crosswise. Do not exceed the maximum permitted tightening torque. Observe the handlebar maker's maximum permitted tightening torque.

Tighten the handlebar clamping screws to maximum 3 Nm. Otherwise damage may be caused to the handlebar stem that would be an enormous safety risk for the rider and for others.



In use

Check all screws for proper torque regularly. If necessary, have the tightening torque adjusted to the maximum permitted torque by a specialized dealer. Make regular checks of the handlebar to be sure that this do not turn easily.

Warranty

We grant a warranty of two years from the purchase date of our products. We are sure you appreciate that warranty can only be claimed if you present the invoice of the purchase of the parts and the invoice of the specialized dealer who installed them. Please return the defective product, together with a description of the defect, your contact data and the above documents to the seller.

The warranty covers defects of material and manufacture; it does not include damage due to normal wear and tear, improper use or non-compliance with the instructions of use. Warranty claims can only be raised against Mcfk. This warranty does not include Mcfk's liability for damages, in particular, for indirect damage as a consequence of accident, other indirect damage or consequential damage.